



MASQUES SCONCES

Design by Noé Duchaufour-Lawrance

LARGEUR / WIDTH	30 cm / 11,8 in
PROFONDEUR / DEPTH	10 cm / 3,9 in
HAUTEUR / HEIGHT	50 cm / 19,7 in

Each piece is handmade from recycled metals in Burkina Faso and finished in France. Bronze is a living material and oxidizes with age and environment which makes its beauty. Variations, Stains and Imperfections in the texture finishes are part of the artisanal process MAISON INTÈGRE is vividly supporting.

TEXTURES & FINISHES AVAILABLE

Different textures and finishes are available upon request depending on the pieces.

WITHOUT PATINA



NATURAL ROUGH



HARD ROUGH



ORGANIC

WITH DARK BROWN PATINA



NATURAL ROUGH



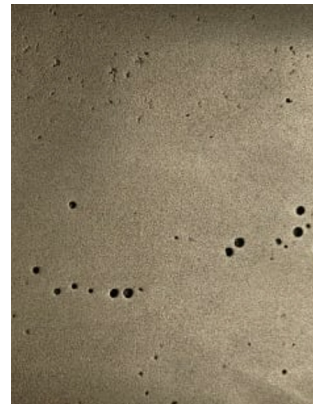
HARD ROUGH



POLISHED



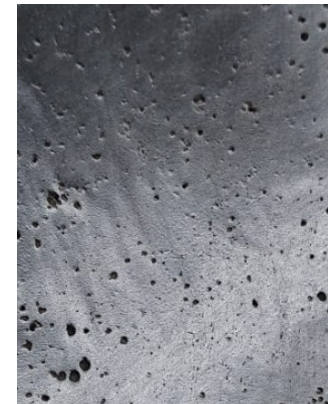
SANDED



MATE SKIN



ORGANIC



POLISHED